**Psalm 31 (30)**

² | ~ In | you, O | LORD, | **I** take | refuge.

Let me | never be | **put** to | shame.

In your | justice, | **set** me | free;

³ | ~ in- | cline your | ear to | me, and | speedily | **rescue** | me.

Be a | rock of | **refuge** for | me,

| ~ a | mighty | strong**hold** to | save me.

⁴ For you | are my | **rock**, my | stronghold!

Lead me, | guide me, | for the | sake **of** your | name.

⁶ Into your | hands I com- | **mend** my | spirit.

You will re- | deem me, O | LORD, O | **faithful** | God.

⁷ You de- | test those | who serve | **empty** | idols.

As for | me, I | trust | **in** the | LORD.

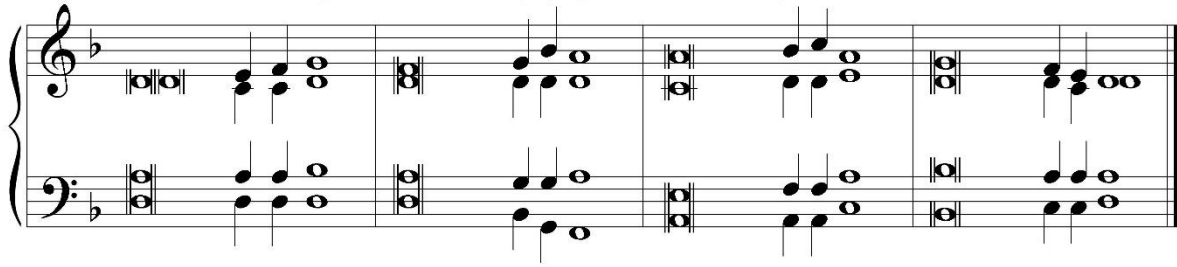
⁸ Let me be | glad and re- | joice **in** your | mercy,

| ~ for | you who have | seen **my** af- | fliction

| ~ and | taken | heed of my | **soul's** di- | stress,

⁹ have not | left me | in the | hands of the | ene- | my, but | set my | **feet** at | large.

D Minor Psalm Tone; 3 lines = mm. 1, 2, 4; 2 lines = mm. 1, 4



²⁰ | ~ How | great is the | goodness, | LORD,
 that you | keep for | those who | fear you,
 that you | show to | those who | trust you
 in the | sight of the | children of | men.

²¹ | ~ You | hide them | in the | shelter | of your | presence,
 | ~ se- | cure from | human | scheming;
 you keep them | safe with- | in your | tent
 from dis- | puting | tongues.

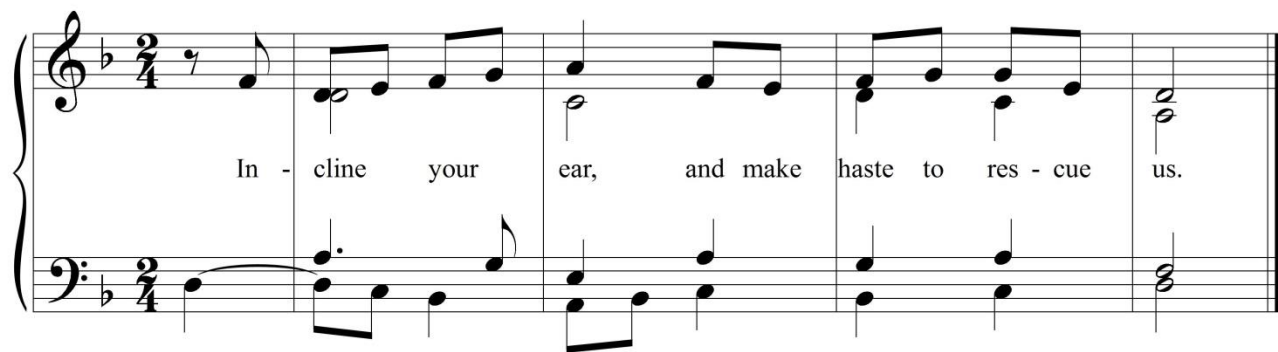
²³ “I am | far re- | moved from your | sight,”
 | ~ I | said in | my a- | larm.
 Yet you | heard the | voice of my | plea
 when I | cried to | you for | help.

²⁴ Love the | LORD, all | you his | saints.
 | ~ The | LORD | guards the | faithful.

²⁵ | ~ Be | strong, | let your | heart take | courage,
 all who | hope in the | LORD.

Glory | be to the | Father, and | to the | Son,
 | ~ and | to the | Holy | Spirit.

As it | was in | the be- | ginning, is | now, and | ever shall | be
 | world | without | end, | A- | men.



Antiphon Source: *Graduale Romanum*, Communion Antiphon for 13th Sunday in Ordinary Time, Years BC (*Inclina aurem tuam*)

Antiphon Translation: Adapted by Jared Ostermann from Revised Grail Psalm 31(30) ("Incline your ear") and Gregorian Missal for Sundays (Solesmes)

Psalm Pairing: *Graduale Romanum*

Psalm Text: Revised Grail

Copyright Acknowledgements:

The Revised Grail Psalms Copyright © 2010, Conception Abbey/The Grail, admin. by GIA Publications, Inc., www.giamusic.com. All rights reserved.