

F Major Psalm Tone; 3 lines = mm. 1, 2, 4; 2 lines = mm. 1, 4



Psalm 23 (22)

¹ | ~ The | LORD is my | shepherd; †

there is | nothing | I shall | want.

² Fresh and | green are the | pastures †

where he | gives me re- | pose.

Near restful | waters he | leads me;

³ he re- | vives my | soul.

| ~ He | guides me a- | long the right | path,

for the | sake of his | name.

⁴ Though I should | walk in the | valley | of the | shadow of | death, †

| ~ no | evil | would I | fear, for | you are | with me.

| ~ Your | crook and your | staff will | give me | comfort.

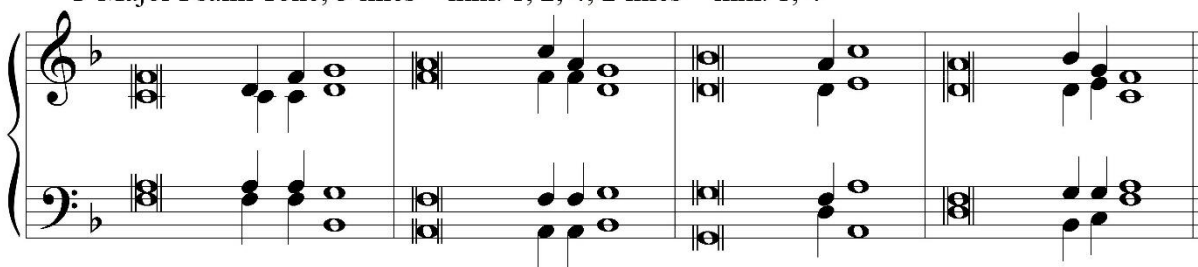
⁵ You have pre- | pared a | table be- | fore me

in the | sight of my | foes.

| ~ My | head you | have an- | ointed with | oil;

| ~ my | cup is | over- | flowing.

F Major Psalm Tone; 3 lines = mm. 1, 2, 4; 2 lines = mm. 1, 4



⁶ Surely | goodness and | mercy shall | follow | me

all the | days of my | life.

In the | LORD's own | house shall I | dwell

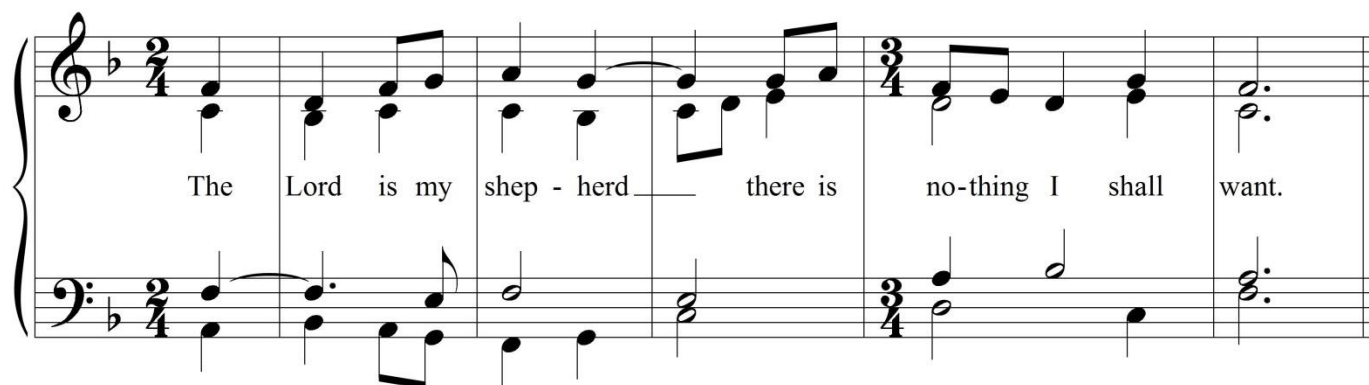
| ~ for | length of | days un- | ending.

Glory | be to the | Father, and | to the | Son,

| ~ and | to the | Holy | Spirit.

As it | was in | the be- | ginning, is | now, and | ever shall | be

world | without | end, A- | men.



Antiphon Source: *Graduale Romanum*, Communion Antiphon for 32nd Sunday in Ordinary Time, Years BC (*Dominus regit*), First line

Antiphon Translation: Roman Missal, Communion Antiphon for 32nd Sunday in Ordinary Time, Option 1 (Cf. Ps 23(22):1-2), First line

Psalm Pairing: *Graduale Romanum*

Psalm Text: Revised Grail

Copyright Acknowledgements:

Excerpts from the English translation of The Roman Missal © 2010, International Commission on English in the Liturgy Corporation. All rights reserved.

The Revised Grail Psalms Copyright © 2010, Conception Abbey/The Grail, admin. by GIA Publications, Inc., www.giamusic.com. All rights reserved.